

Windows Install of TKACTIONS V6 Module for Photoshop CC

The TKACTIONS V6 RapidMask2 module for Photoshop CC needs to be manually installed using the directions below.

1. Quit Photoshop.

2. Find (or create) the correct destination folder on your hard drive. The correct destination is the "extensions" folder at the end of the following path:

Computer > C: > Program Files (x86) > Common Files > Adobe > CEP > extensions

3. If not using the current version of Photoshop CC, it may be necessary to create the needed destination folder in the installation path. In older versions, the "CEP" and "extensions" folders might be missing from the path listed above if they have not previously been required by Photoshop. If they are not present, make them.

- a) Create a "CEP" folder in the "Adobe" folder, and
- b) Create an "extensions" folder in the "CEP" folder.

It's very important to get this path correct, including the uppercase and lowercase letters. You can copy and paste the folder names from above if need be, but do NOT include the quotation marks. Once the correct path has been found or created, move onto Step 4. Newer versions of Photoshop (CC 2015 and higher) should already have this path in place.

Note: Do NOT use the "CEPServiceManager4" folder that you may also see in this path as the destination folder. It will NOT work to install the module into Photoshop.

4. Locate the installation folder in the download folder. It has the following name:

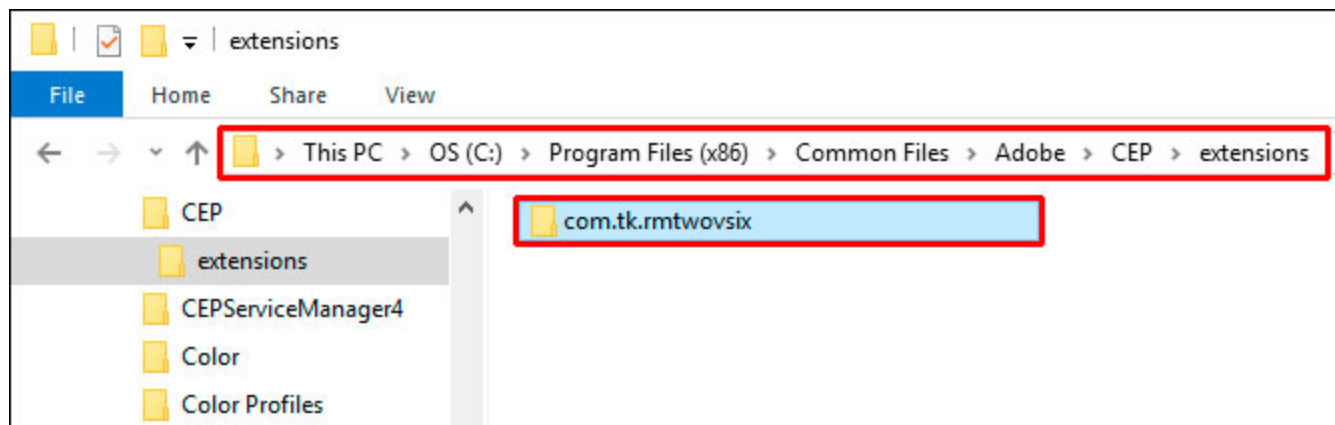
com.tk.rmtwovsix

It is found in the download folder in the following path:

Download folder > "TKACTIONS V6" folder > "Windows" folder

5. Copy the installation folder from the download folder to the "extensions" destination folder.

The image below shows the correct installation.

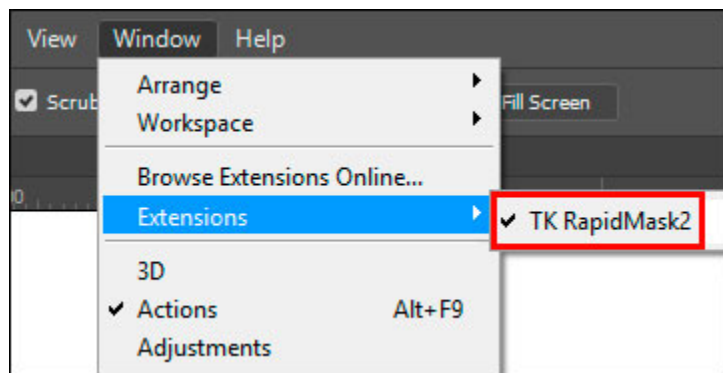


NOTE #1: Do NOT open the installation folder and copy the contents. Just copy the entire folder to the "extensions" folder.

NOTE #2: Do NOT place the entire download ZIP folder in the "extensions" folder. Just the installation folder should go inside the "extensions" folder.

NOTE #3: You will likely to be asked for administrative permission to copy the installation folder to the "extensions" folder. Grant the permission when it is requested.

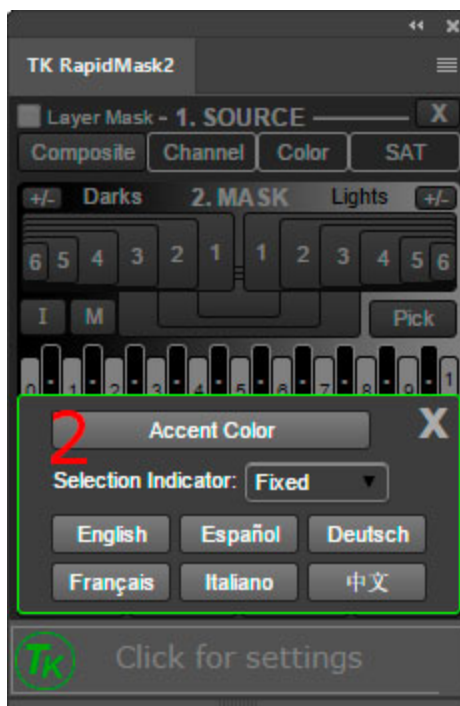
6. Open Photoshop CC and click the menu item Window > Extensions > TK RapidMask2 to open the installed module.



(More installation directions on next page.)

7. Choose settings.

- Click the Help window at the bottom of the module.
- Choose language, accent color, and selection indicator appearance using the controls.
- Close the settings window by clicking the "X" in the upper right corner or by clicking anywhere outside the settings window.



8. Save the download folder in safe place. You may need to reinstall the module after Photoshop, operating system, or other upgrades.

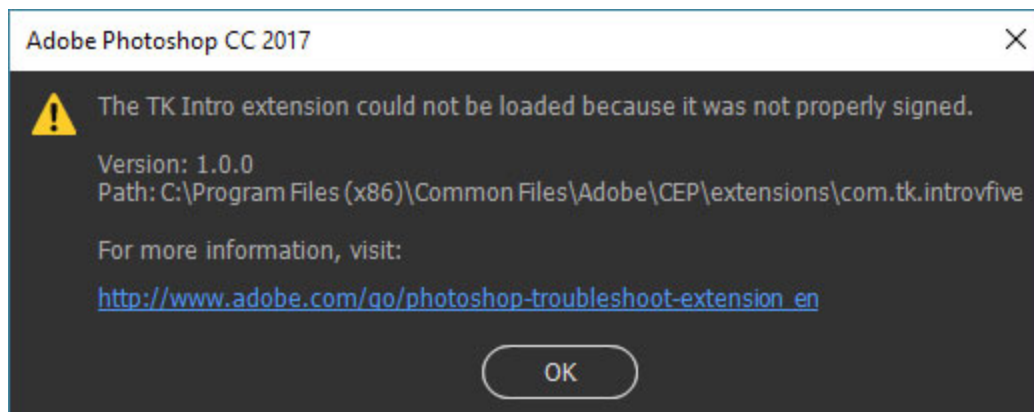
[Contact Tony Kuyper](#) if there are any problems, but please examine the above images closely to make sure the module has been properly installed. Please also review the troubleshooting section below. The module works 100% of the time when properly installed in a properly functioning version of Photoshop.

Troubleshooting

As with any software, there are occasionally problems. The situations below have occurred for a few people. If you are having problems, please review these tips to get the TKActions V6 module working properly.

1. Error message: "The <module name> extension could not be loaded because it was not properly signed."

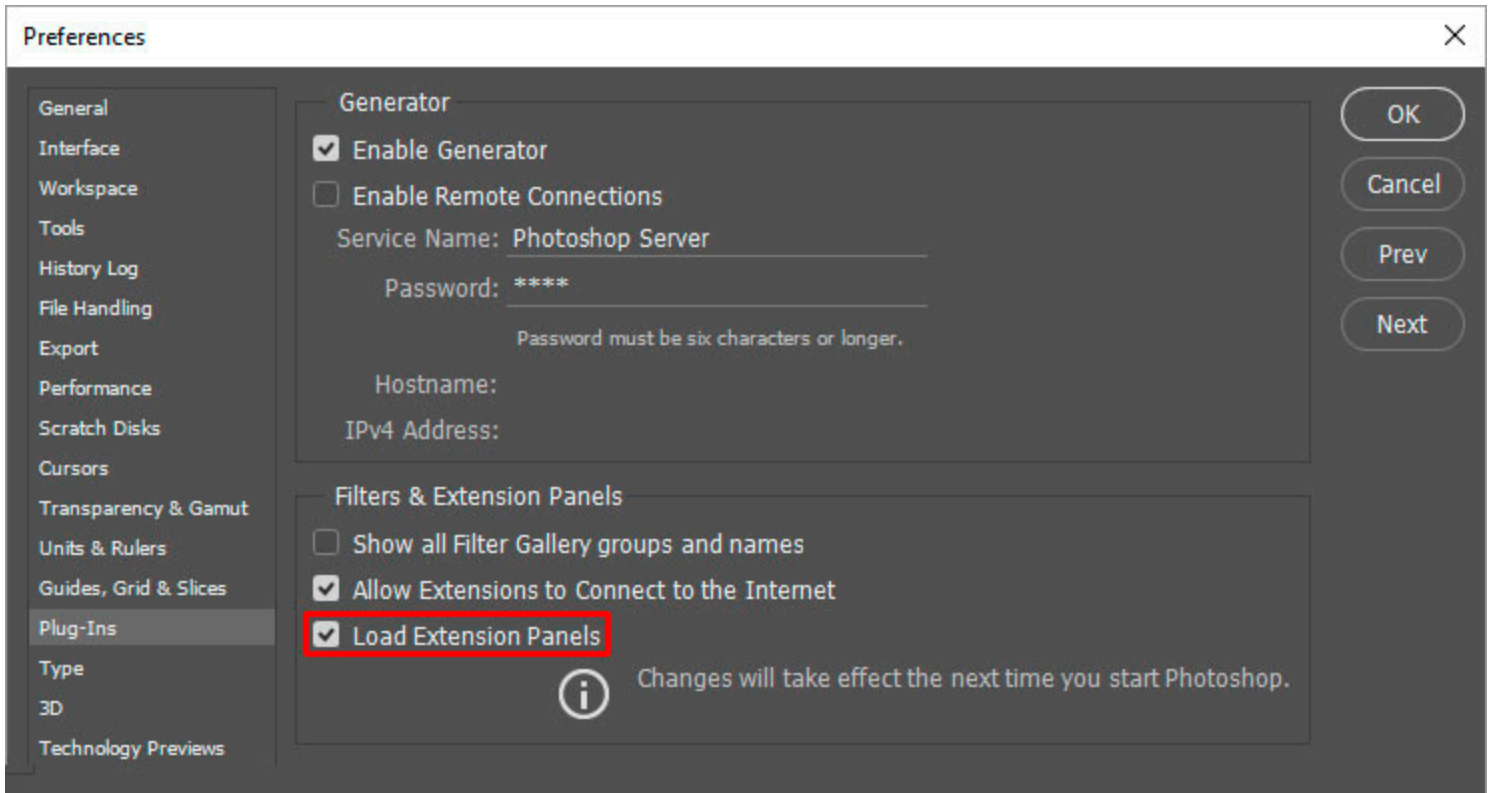
This error means that the contents of the module's installation folder have been altered. The module has indeed been properly signed, but the signature chain, which guarantees unaltered code, is broken. This can happen if the user accidentally or on purpose opens the installation folder, but it also appears to happen spontaneously and randomly sometimes during routine installation, possibly more commonly with drag-and-drop. The solution is to use the download link to get a NEW download folder and then to replace the installation folder in the "extensions" folder with the fresh copy from the new download.



2. The module has been installed but don't show up in Photoshop. There are a several possibilities to consider here.

a) **Make sure to click through the menu command Window > Extensions to actually open the module in Photoshop.** Installation is not enough to actually have the module appear in Photoshop. The menu command needs to be used to open the module. Once the module is open, it will stay open and can be docked to a panel docking bar.

b) There is a Photoshop preference setting that needs to be checked in order for extension panels to be loaded. Make sure the checkbox "Load Extension Panels" under the "Plug-Ins" preferences is checked (red box, image below).



c) If you are using the original version of Photoshop CC (version 14.x), then the path to the "extensions" folder listed above will not work. The Photoshop menu command Help > About Photoshop... will display the version of Photoshop being used. At this point, most people using this old, original version of Photoshop CC are using an illegal copy of Photoshop in violation of Adobe's copyright. If this is the case, the best solution is to purchase a legitimate subscription to Photoshop CC and use the V6 module in the latest version of Photoshop. It works just fine in the up-to-date version of Photoshop CC.

An alternative path for installing the installation folder in this old version of Photoshop CC is as follows:

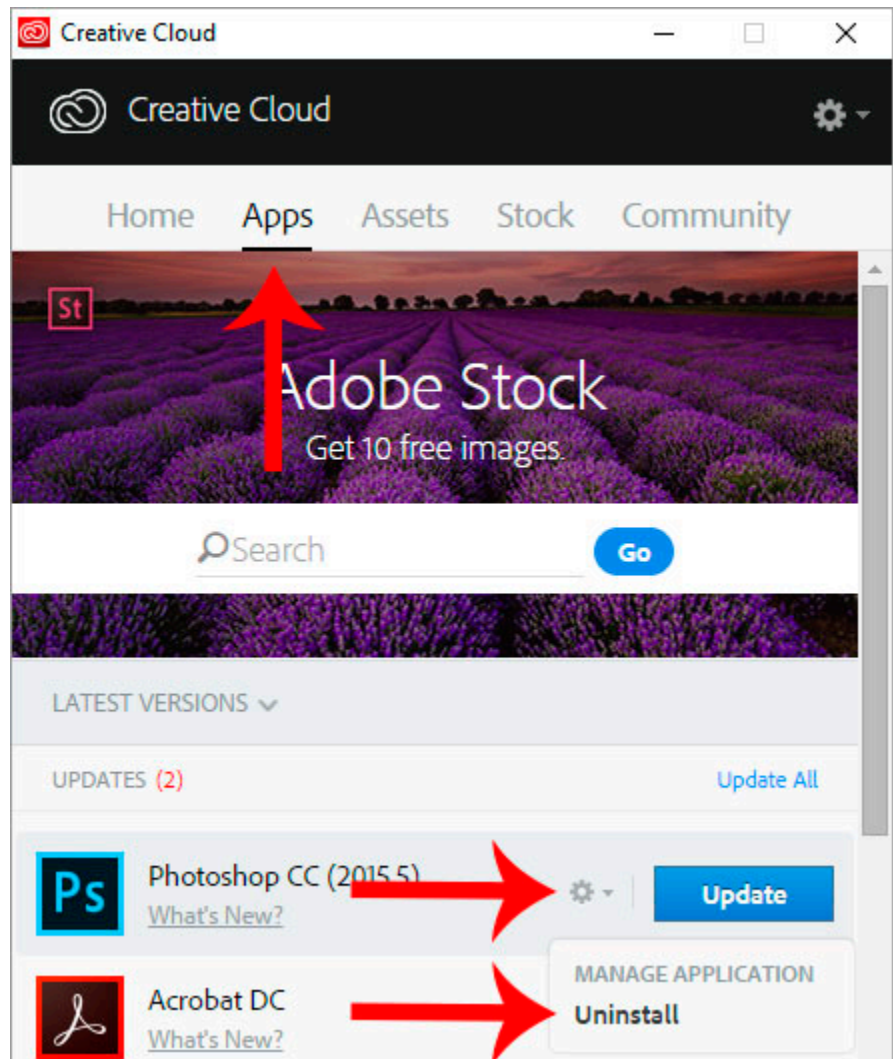
Computer > C: > Program Files (x86) > Common Files > Adobe > CEPServiceManager4 > extensions

Please note that the module has NOT been tested in pirated copies of Photoshop, but there are several reports that it doesn't work properly

d) Corrupted preferences files can also cause many different types of problems in Photoshop. When unexpected, unexplainable things start happening in Photoshop, it's a good idea to reset these preferences files. However, resetting these files may cause display options, file-saving options, cursor options, etc. to be reset to default values, so it's generally best to reserve this option until other things have been tried. Here's a webpage that tells how to reset the preferences files:
<http://helpx.adobe.com/photoshop/using/preferences.html>

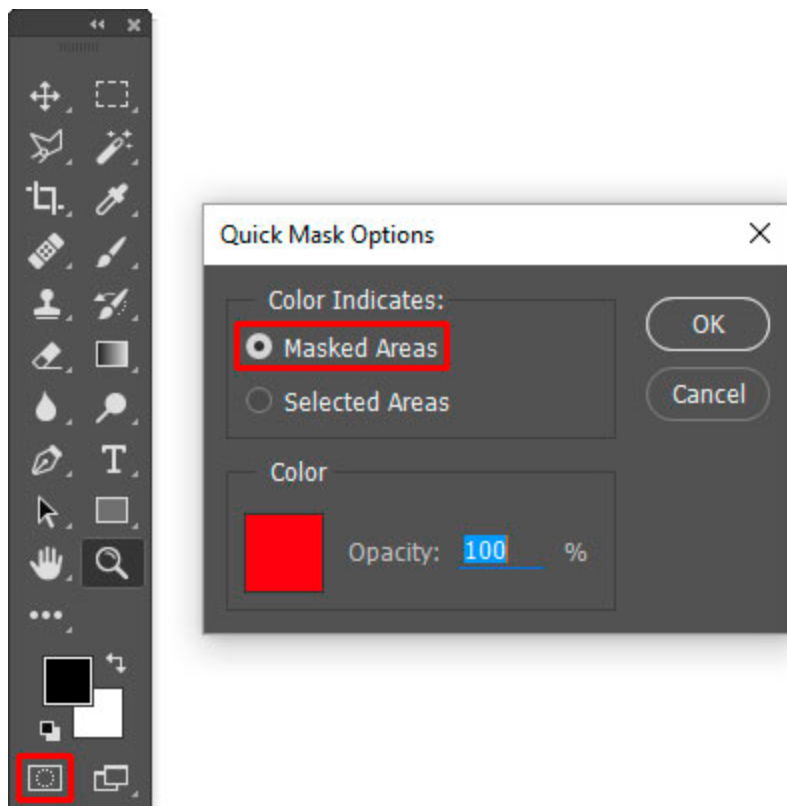
e) Reinstalling Photoshop is sometimes necessary. It's the only way to get Photoshop to recognize properly installed extension panels like the V6 module. Use the Creative Cloud desktop app to uninstall Photoshop. On the Apps tab, hover the mouse over the installed application, click the gear icon, and choose "Uninstall" from the MANAGE APPLICATION pop-up menu.

Once Photoshop is uninstalled, reboot the computer and use the Creative Cloud desktop app to reinstall the application.



3. The masks generated by the module are inverted (the "Lights" masks are negatives and the "Dark" masks are positives).

This is NOT a problem caused by the module. If you create a selection using one of the Photoshop's other selection tools and then save the selection as a mask, it will also be inverted. So this is a Photoshop problem. There are two possible solutions.



a) Double-click the Edit in Quick Mask Mode button (rectangle with a circle inside) near the bottom of the Tools panel. From the window that opens, make sure the radio button for "Masked Areas" is selected. If the "Selected Areas" radio button is selected, masks will be inverted.

b) If the first solution doesn't work, it's possible that the Photoshop preferences files are corrupt and need to be reset. An online video to help do this can be found [here](#).