

# User Guide

300Mbps High Gain Wireless USB Adapter

Link  
More



U1

# Copyright Statement

**© 2015 Shenzhen Tenda Technology Co., Ltd. All rights reserved.**

Tenda is a registered trademark legally held by Shenzhen Tenda Technology Co., Ltd. Other brand and product names mentioned herein are trademarks or registered trademarks of their respective holders. Copyright of the whole product as integration, including its accessories and software, belongs to Shenzhen Tenda Technology Co., Ltd. No part of this publication can be reproduced, transmitted, transcribed, stored in a retrieval system, or translated into any language in any form or by any means without the prior written permission of Shenzhen Tenda Technology Co., Ltd.

## Disclaimer

Pictures, images and product specifications herein are for references only. To improve internal design, operational function, and/or reliability, Tenda reserves the right to make changes to the products without obligation to notify any person or organization of such revisions or changes. Tenda does not assume any liability that may occur due to the use or application of the product described herein. Every effort has been made in the preparation of this document to ensure accuracy of the contents, but all statements, information and recommendations in this document do not constitute the warranty of any kind, express or implied.

# Contents

<b>Chapter 1 Product Introduction .....</b>	<b>1</b>
1.1 Overview .....	1
1.2 Features .....	1
<b>Chapter 2 Installation .....</b>	<b>2</b>
2.1 Install wireless USB adapter .....	2
2.2 Install Tenda network adapter program .....	2
<b>Chapter 3 Tenda UI Function .....</b>	<b>5</b>
3.1 Station Mode .....	5
3.2 SoftAP Mode .....	8
3.3 WPS .....	9
By PBC .....	10
By PIN .....	11
3.4 About .....	13
<b>Chapter 4 Uninstall Software .....</b>	<b>14</b>
Windows 7 .....	14
Windows 8 .....	15
Windows 10 .....	17
<b>Appendix 1 FAQs .....</b>	<b>18</b>
<b>Appendix 2 Connect to WiFi via Windows Built-in WLAN Program .....</b>	<b>19</b>
Windows XP .....	19
Windows 7 .....	20
Windows 8 .....	21
<b>Appendix 3 Disable Other Wireless Adapter .....</b>	<b>22</b>
<b>Appendix 4 Safety and Emission Statement .....</b>	<b>23</b>

## Before Installation

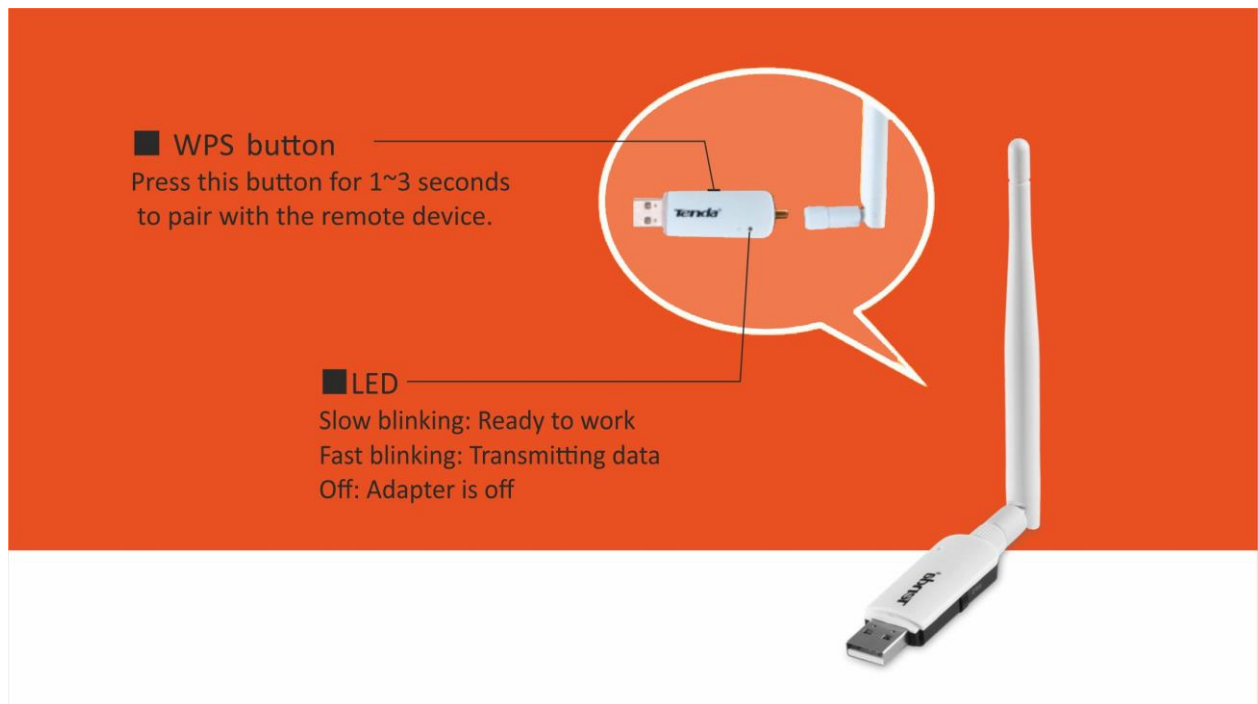
1. This user guide may instruct you to install and configure the device. Please read carefully before you start to use this product.
2. To avoid possible network conflicts between this Tenda network adapter and those of other manufactures, it's recommend that you first disable the network adapters from other manufacturers before installing the driver. See [Appendix 3 Disable Other Wireless Adapter](#) for details.

May you have a nice experience!

# Chapter 1 Product Introduction

## 1.1 Overview

Tenda U1, wireless USB adapter, adopts 11n technology, which makes the wireless transmission speed up to 300Mbps. In addition to making a desktop computer able to connect to a wireless network in Station mode, it supports WiFi sharing, which means you can install it with a desktop computer to transform the wired network into WiFi signal. Anyway, it is a cost-effective and easy-to-install product no matter you are the technical or a novice. The new UI (User Interface) may give you a totally fresh and clear experience.



## 1.2 Features

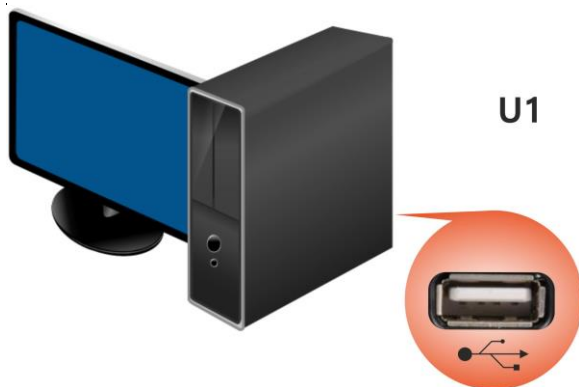
- 11N wireless speed up to 300Mbps
- Complies with IEEE 802.11b/g/n standards
- Supports WEP, WPA-PSK, WPA2-PSK security modes
- Supports soft AP feature
- 3.5dBi external omnidirectional and detachable antenna
- Complies with Windows 10 / 8 / 8.1 / 7 / XP / Vista, Linux and MAC OS

# Chapter 2 Installation

The installation steps below are described on Windows 7. You can take them for reference if you are using other system operations.

## 2.1 Install wireless USB adapter

Insert the Wireless USB adapter into a USB port of your computer.



---

**TIP:**

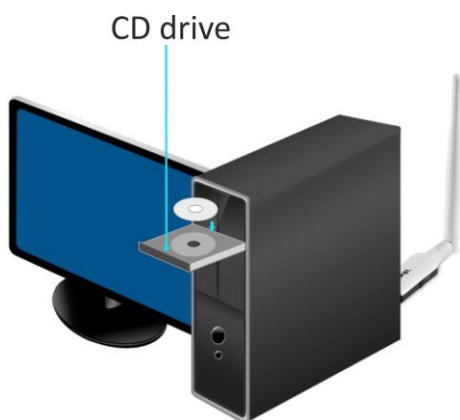
The wireless USB adapter is compatible with Windows XP / Vista / 7 / 8 / 8.1 / 10, Linux, and Mac OS.

---

## 2.2 Install Tenda network adapter program

After you have finished installing the wireless USB adapter, install Tenda network adapter program for a perfect experience.

1. Insert the included CD in your PC's CD drive.



---

**TIP:**

Windows 10 are free of installing the software. It can connect to WiFi with the wireless USB adapter directly. But without launching UI, you cannot do WPS connection and shift working mode.

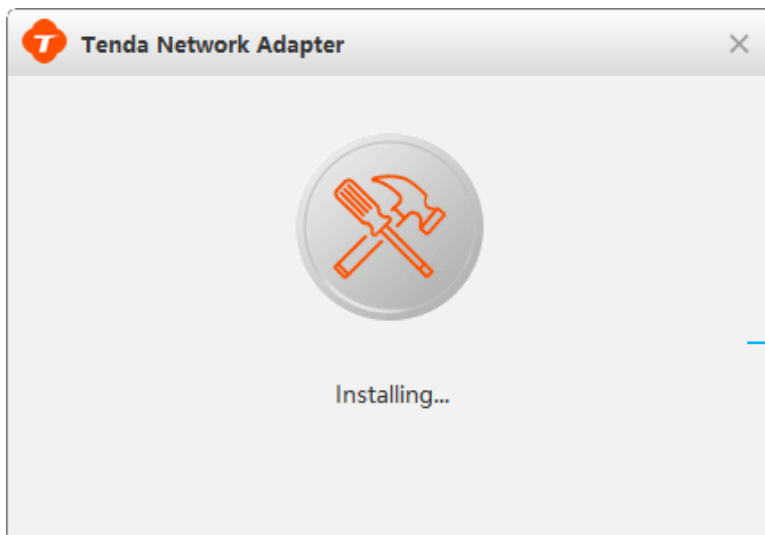
---

2. Open the CD file and double click **Setup.exe** to run the adapter program.



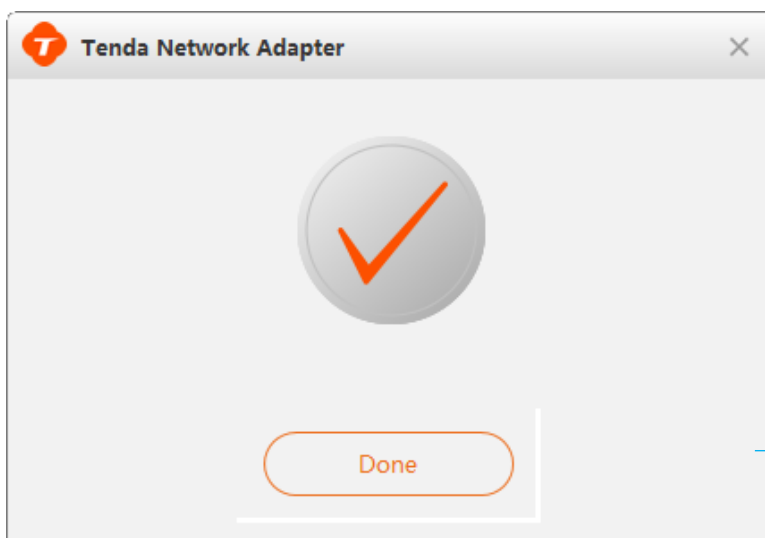
Check "Accept the Agreement" and then click **Install Now**.

Note that the installation directory cannot include Chinese characters, or installation may fail.



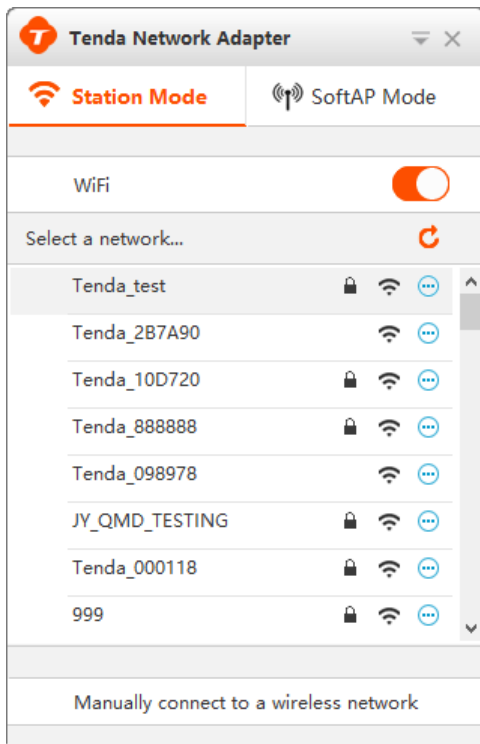
Installing...


This process will last for minutes. Please be patient.





Click **Done** to finish setup.

Once the program is installed successfully, the main UI will pop up as below. You can set up the program as your need.



: This is the function turn of adapter. Keep it on, or the adapter will not work.

: Refresh button; click it to refresh the available network list.

: Show more info of the selected network.

: The network is secured.

**Manually connect to a wireless network:** Click this to add a hidden wireless network manually. Click [here](#) for details.



## Chapter 3 Tenda UI Function

This section includes information below:

[Station Mode](#)

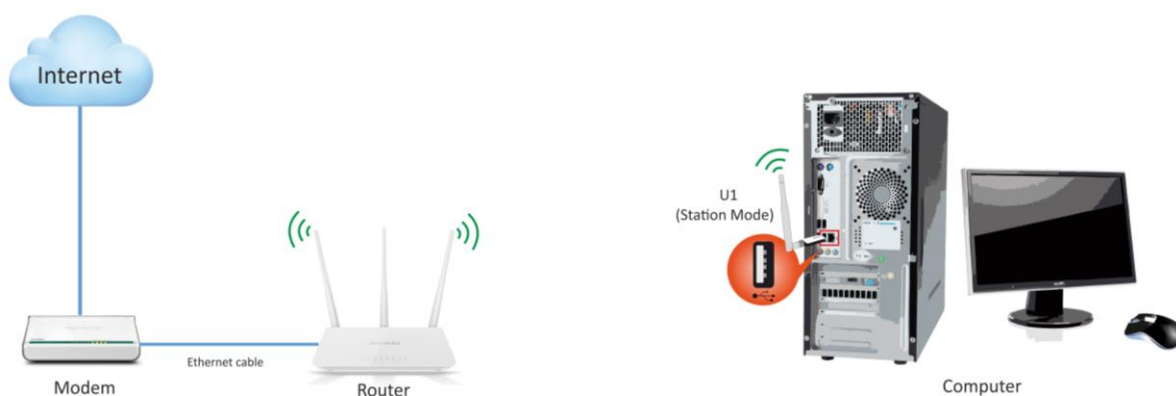
[SoftAP Mode](#)

[WPS](#)

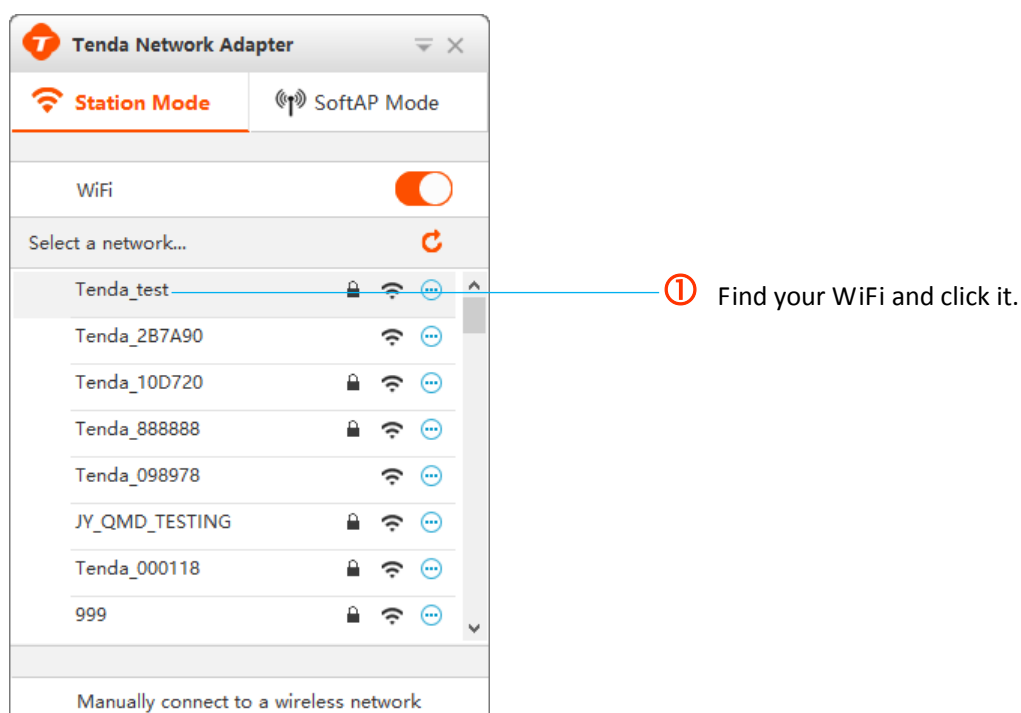
[About](#)

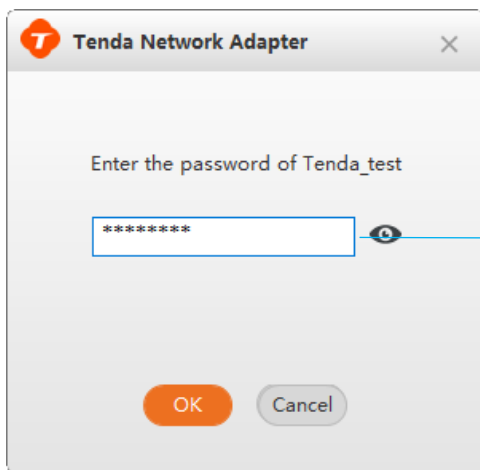
### 3.1 Station Mode

The wireless USB adapter works in station mode by default. In station mode, the wireless adapter serves as a wireless signal receiver. A desktop computer installed with a wireless USB adapter can get a WiFi connection request and connect to a wireless network.



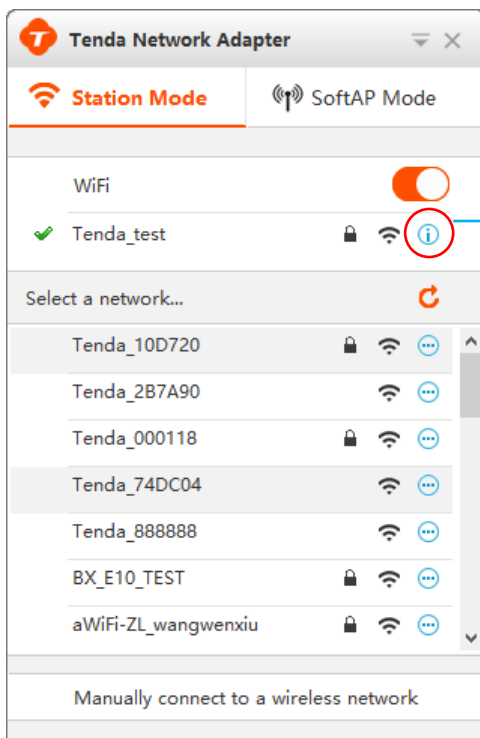
After you have installed the Tenda network adapter program successfully, you can connect to WiFi with this program in station mode.



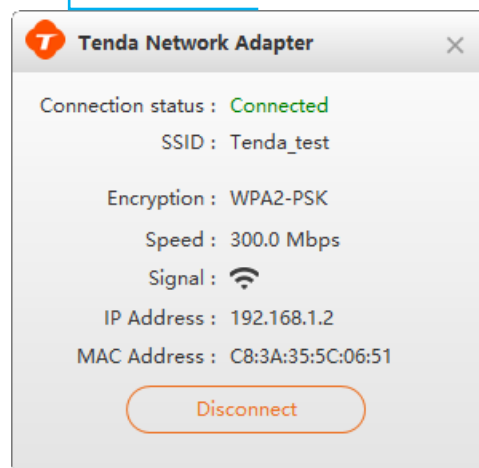


② Enter the WiFi password and click **OK**.

Connected successfully!



Click **i** to display more info about the connected network.

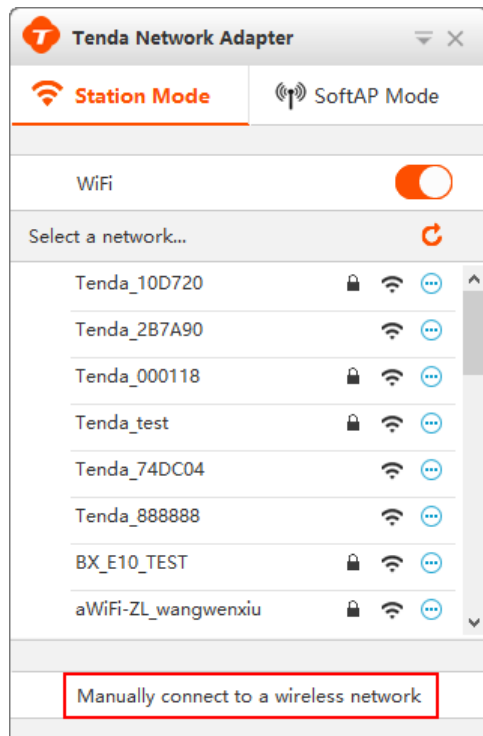


**Tip:**

You can also connect to WiFi via [Windows built-in WLAN program](#) or [WPS connection](#).

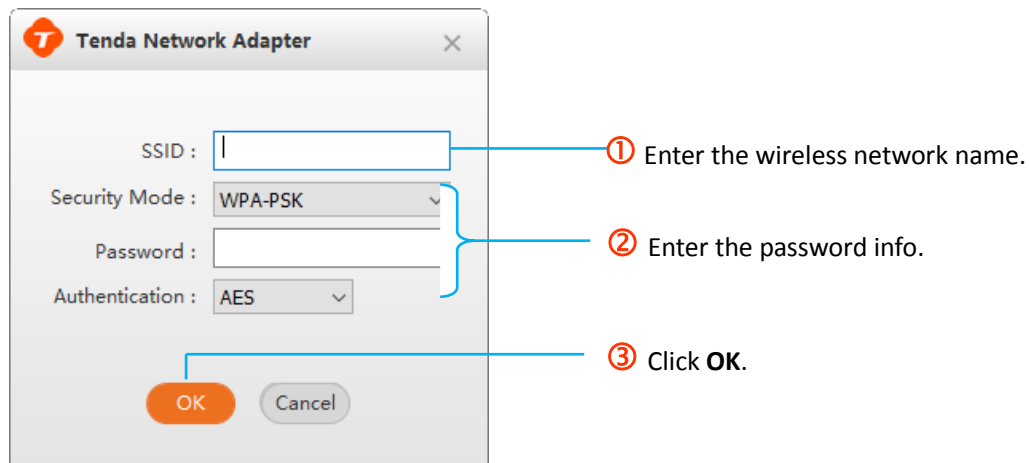
## Manually connect to a wireless network

This tool may help you connect to a hidden network.



### To connect to a hidden network

Click **Manually connect to a wireless network** to pop up the interface below, and enter information for the wireless network you want to add.



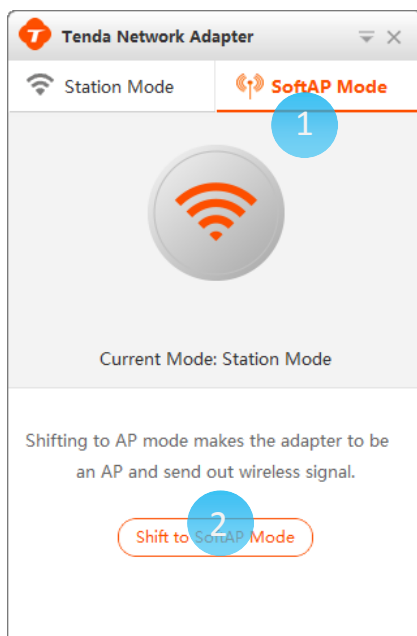
## 3.2 SoftAP Mode

In SoftAP mode, the adapter can transform the existing wired network into WiFi signal and send it out for wireless clients (smart phone, laptop, iPad, etc.) connecting to. Note that station mode will be disabled while SoftAP mode is enabled.



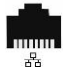
### To switch to SoftAP mode

Click  **SoftAP Mode** and .

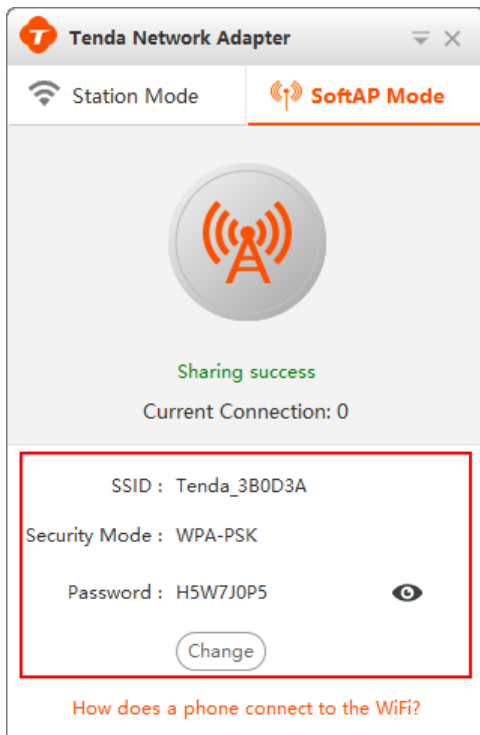


#### Tip:

Note that before you shift the working mode to SoftAP

mode, make sure the network port  of the computer is connected to the Internet first.

After it shifts to SoftAP mode successfully, the UI will be shown as below. And here you can view the default WiFi info of SoftAP mode.



Click **Change** to customize the WiFi info.

#### Default WiFi info of SoftAP mode:

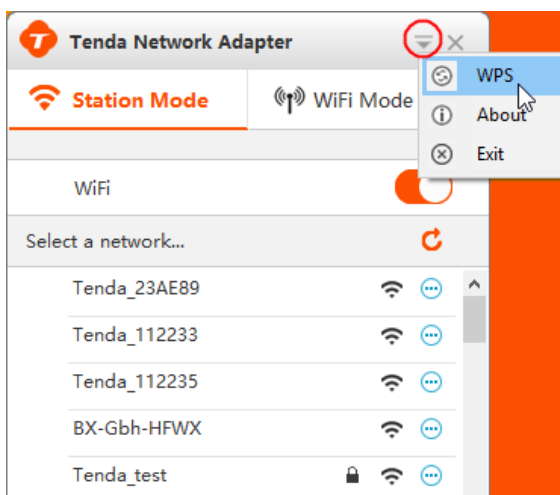
SSID: Tenda\_xxxxxx

Security Mode: WPA-PSK

Password: 8 random characters.

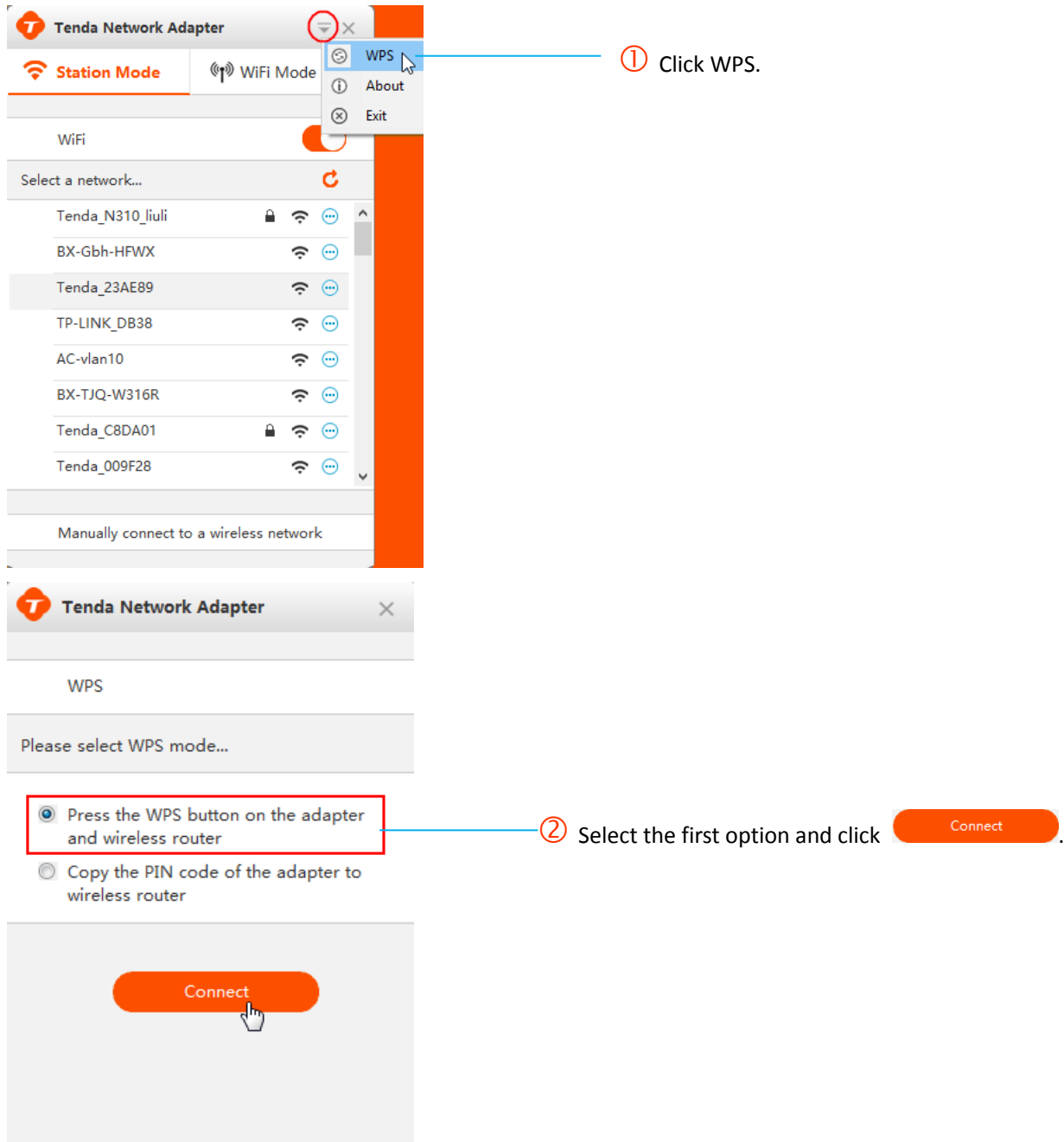
### 3.3 WPS

Wi-Fi Protected Setup makes it easy for home users who know little of wireless security to establish a home network, as well as to add new devices to an existing network without entering long passwords. WPS feature works on condition that the remote router also supports WPS. The operations of WPS on the remote router see its manual. WPS connection supports PBC and PIN modes. The operations below are for references.

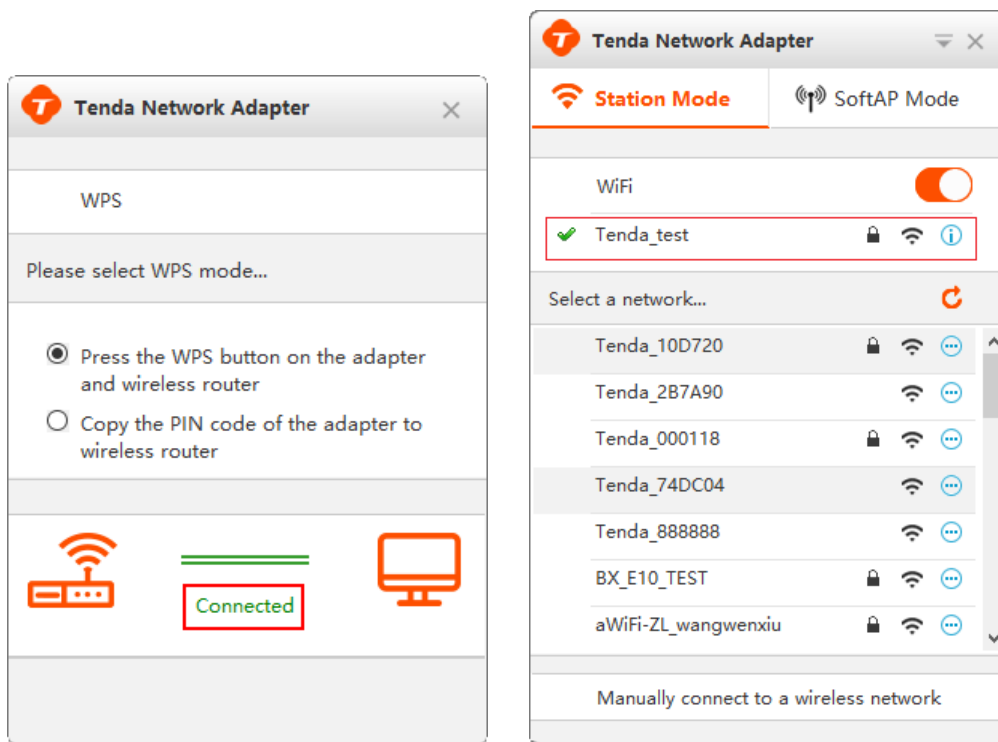


## By PBC

1. Enable the WPS feature of the remote AP or router and press the WPS button on it. (See its manual for details.)
2. In two minutes, launch Tenda wireless adapter UI, and press the WPS button on the adapter for 1~3 seconds. Or you can also go to the WPS interface and do as the following instructions.



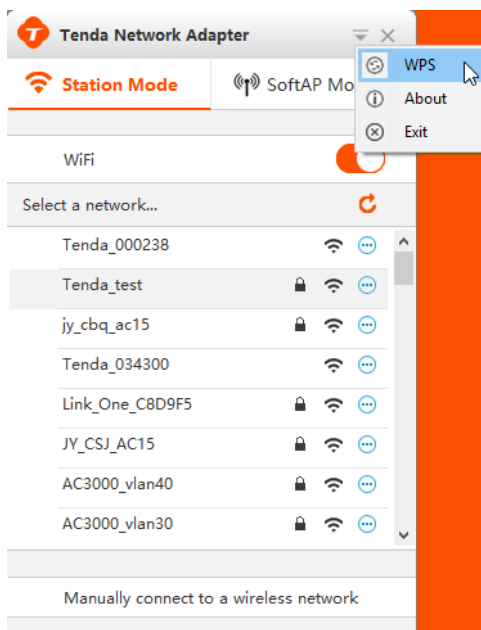
Connected! You can go to the main UI to check the status.



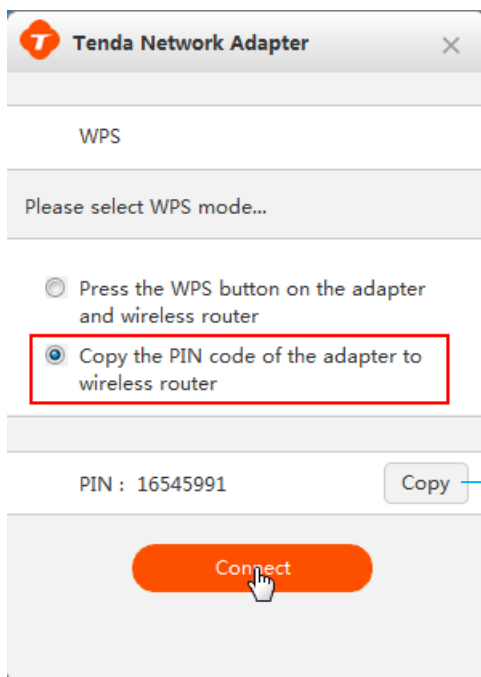
## By PIN

Also, this wireless USB adapter offers a random PIN code with 8 characters for WPS-PIN connection with the remote device.

1. Click **WPS** to enter the configuration screen.

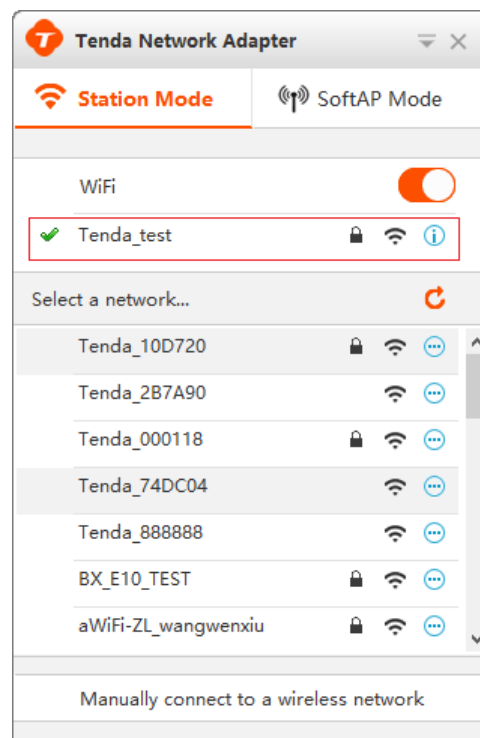
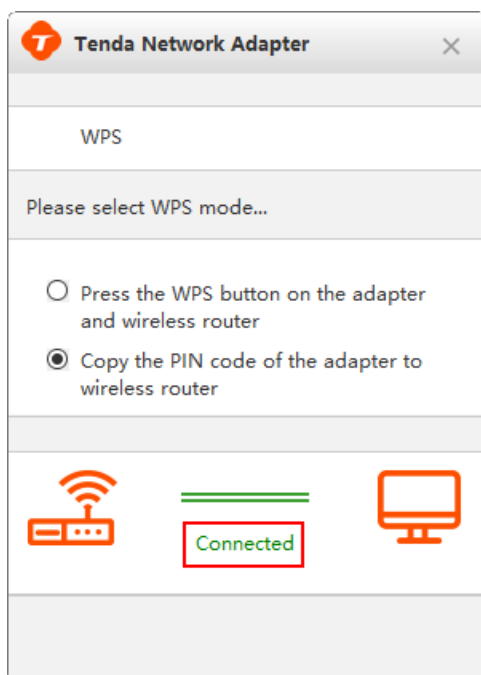


2. Select the second option and click **Connect**.



You can click **Copy** to copy PIN code to the remote router or AP.

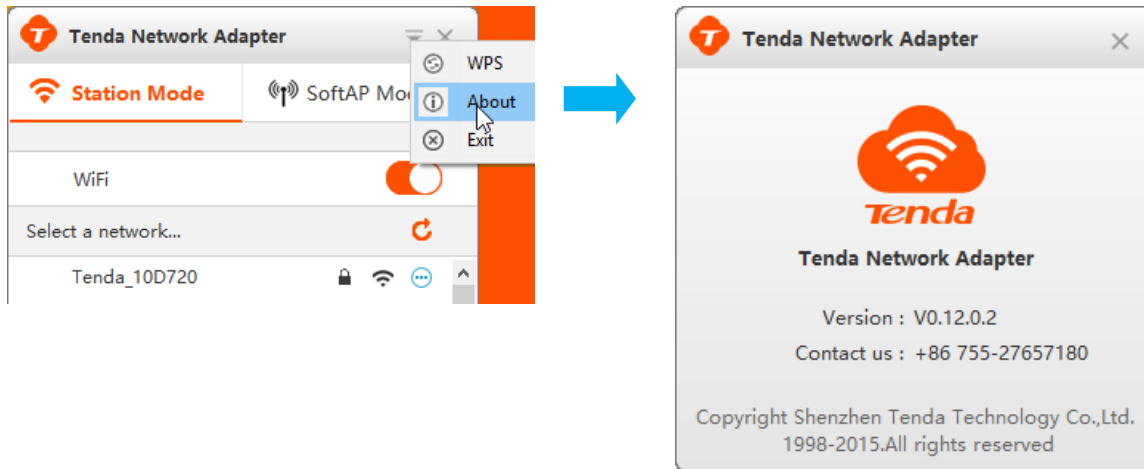
3. Then, access the remote device, and copy the PIN codes of the adapter to it. (The operations about the remote device see its manual.)
4. If the UI shows as below, the WPS connection is done. Or you can go to the main UI to check the status.





## 3.4 About

You can get version info of the wireless network adapter program in **About** section.



# Chapter 4 Uninstall Software

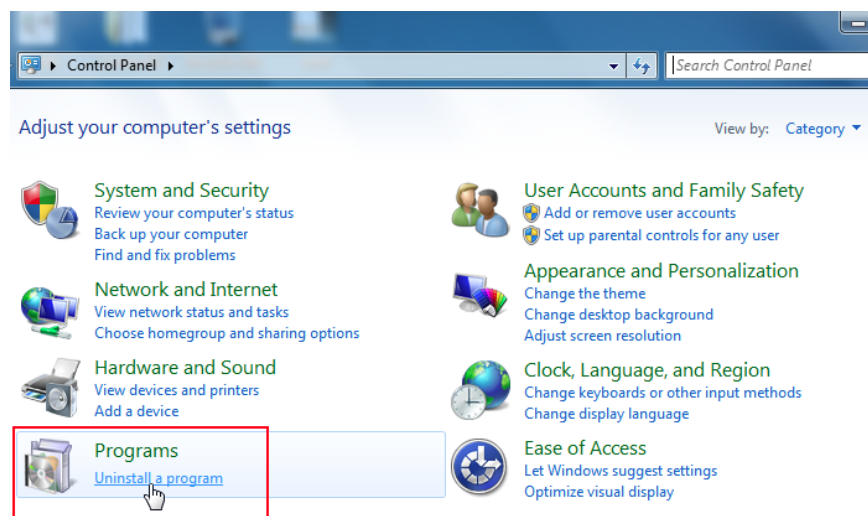
This part shows you how to uninstall Tenda network adapter in Windows 7 / 8 / 10. If you are using other OS, these may be your helpful references as well.

## Windows 7

1. Click **Start** and select **Control Panel**.



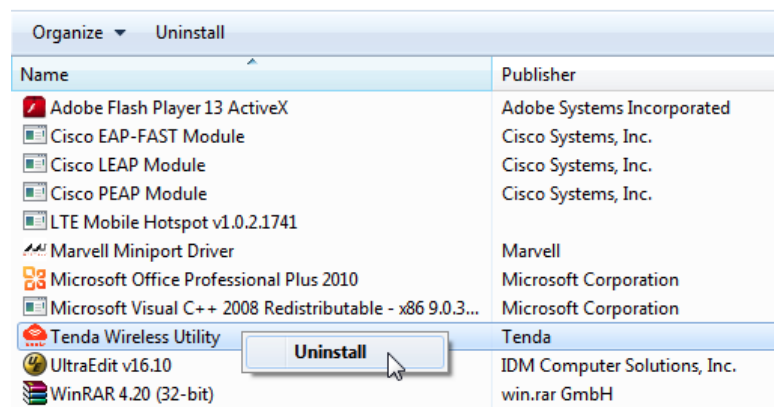
2. Click **Uninstall a program** under **Programs**.



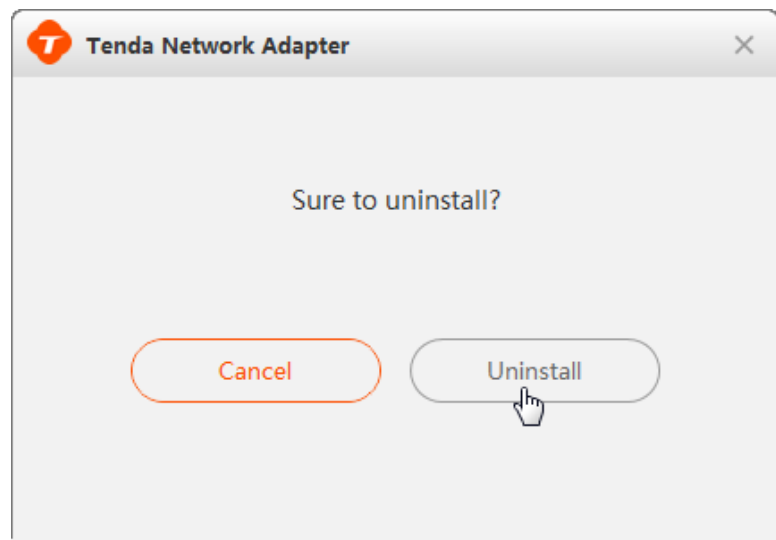
### Uninstall or change a program

3. Select the software and right click to uninstall it.

To uninstall a program, select it from the list and then click Uninstall, Change, or Repair.

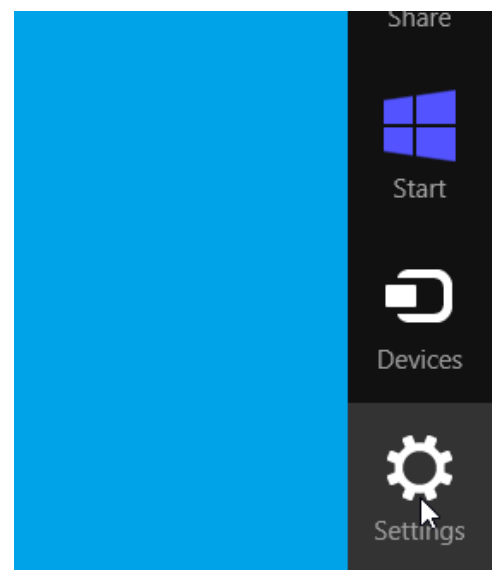


4. Click **Uninstall** on the popped screen.

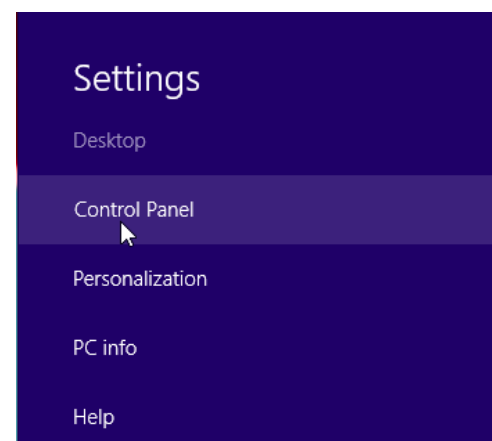


## Windows 8

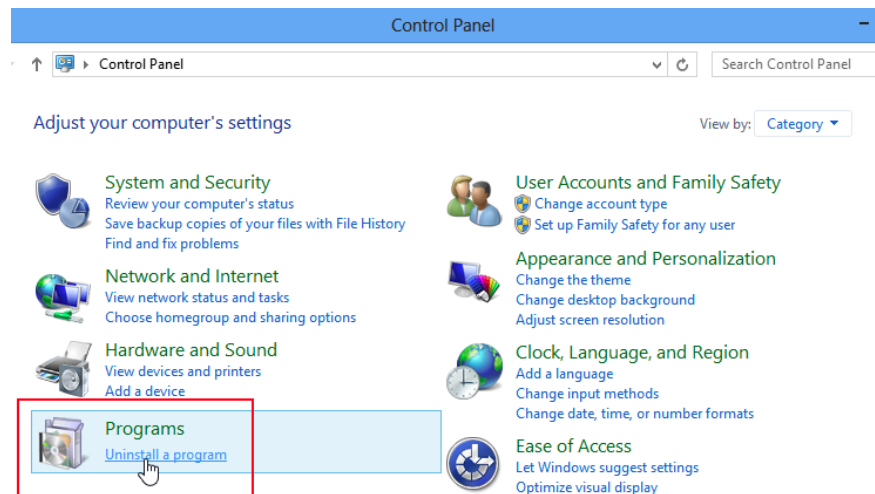
1. Slide your mouse to the top right of the desktop and click **Settings**.



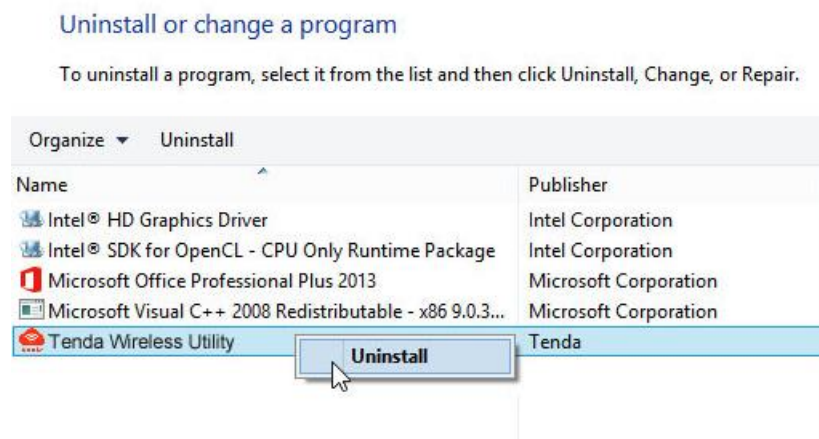
2. Click **Control Panel**.



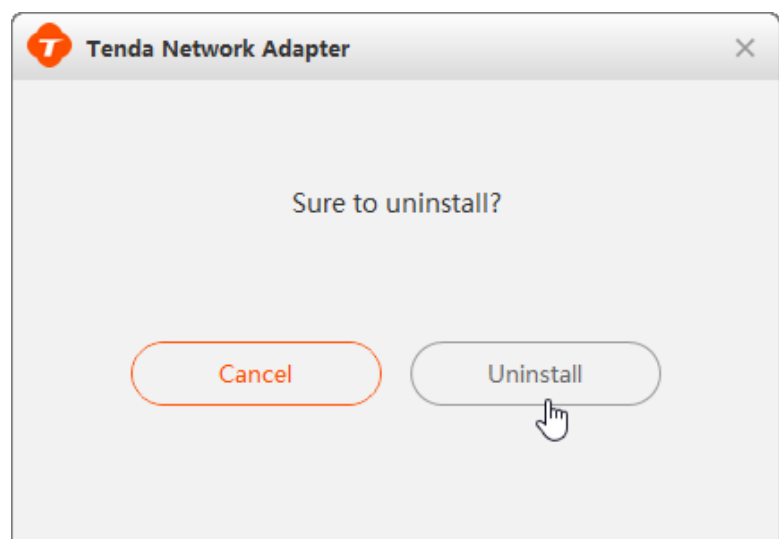
3. Click **Uninstall a program** under **Programs**.




4. Select the software and right click to uninstall it.

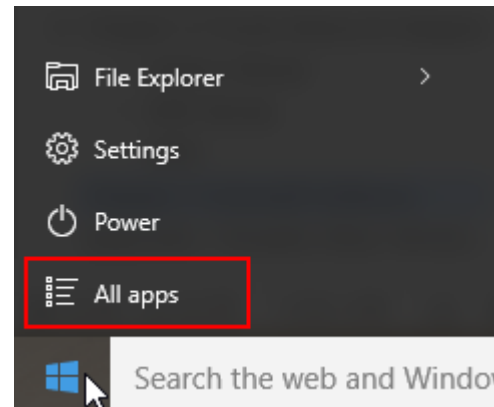


5. Click **Uninstall** on the popped screen.



## Windows 10

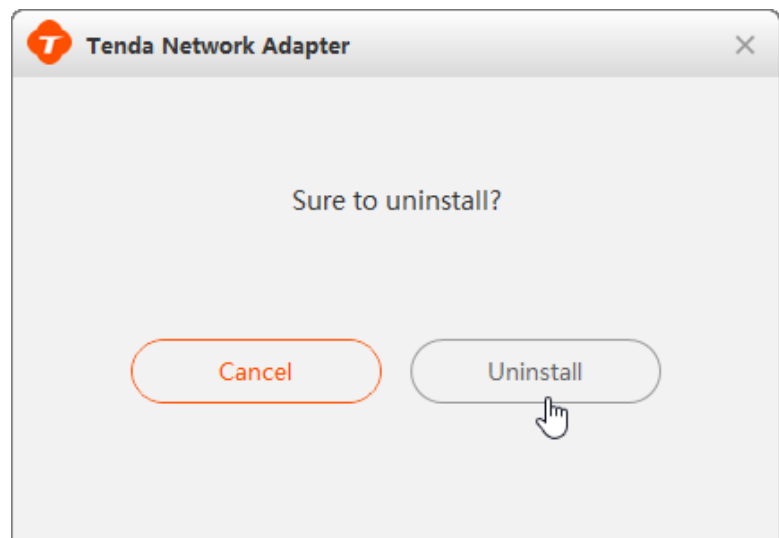
1. Click  Windows icon and select **All apps**.



2. Find Tenda and click **Uninstall**.



3. Click **Uninstall** on the dialog below.



## Appendix 1 FAQs

**Q1: I failed to connect to WiFi from the adapter when it worked in Station mode. What should I do?**

A1: a. Make sure you have entered the correct password.

b. If you are manually connecting to a hidden network, make sure you have entered the correct network info.

**Q2: I failed to do WPS connection with the remote device. What should I do?**

A2: a. Make sure the obstacles within the remote device and the wireless USB adapter as less as possible.

b. Make sure the WPS feature of the remote device is enabled. (Take its manual for references)

c. Make sure the WPS feature of the wireless USB adapter is enabled. (LED of the wireless USB adapter will get blinking if WPS is enabled.)

**Q3: I failed to shift to SoftAP mode. What should I do?**

A3: Unplug the wireless USB adapter and retry.

**If you have any problem or suggestion about the product or this manual, contact us.**

Technical Support: support@tenda.com.cn

Telephone: (86 755) 2765 7180

Email: sales@tenda.com.cn

Website: <http://www.tendacn.com>

Skype: tendasz

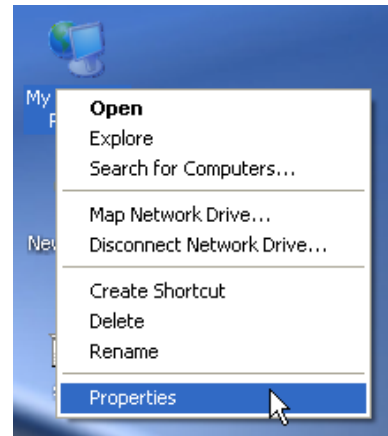
YouTube: Tendasz1999

## Appendix 2 Connect to WiFi via Windows Built-in WLAN Program

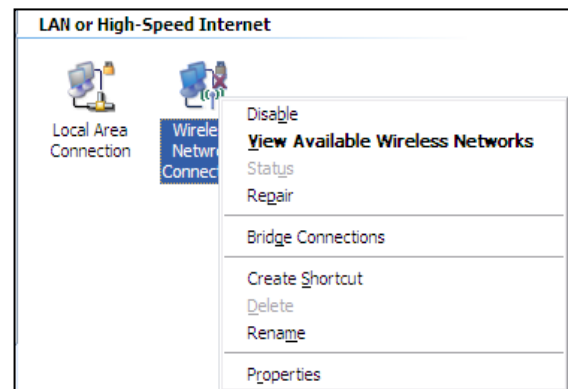
The steps of joining a wireless network may differ from operation systems. Steps in Windows XP / 7 / 8 are detailed as below. If you are using other OS, these steps may be your helpful references as well.

### Windows XP

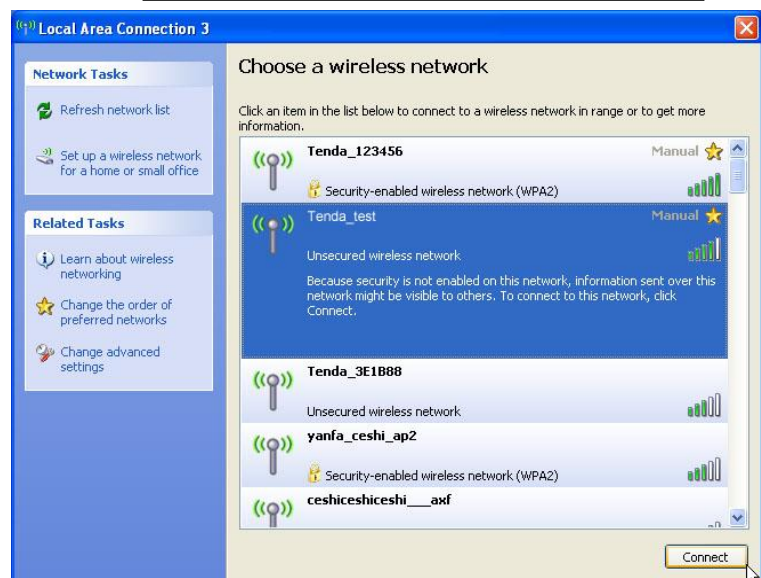
1. Right click **My Network Places**, and select **Properties**.



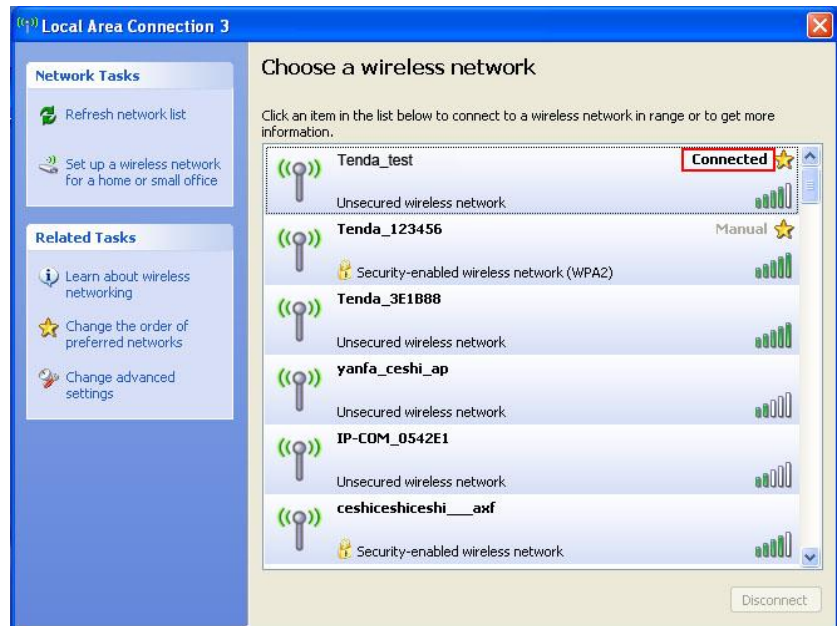
2. Right click **Wireless Network Connection**, and select **View Available Wireless Networks** from the pop-up submenu.






3. Select your wireless network from the list and then follow onscreen instructions.



4. When your SSID (wireless network name) displays **Connected** as shown right, you've connected to it for Internet access successfully.

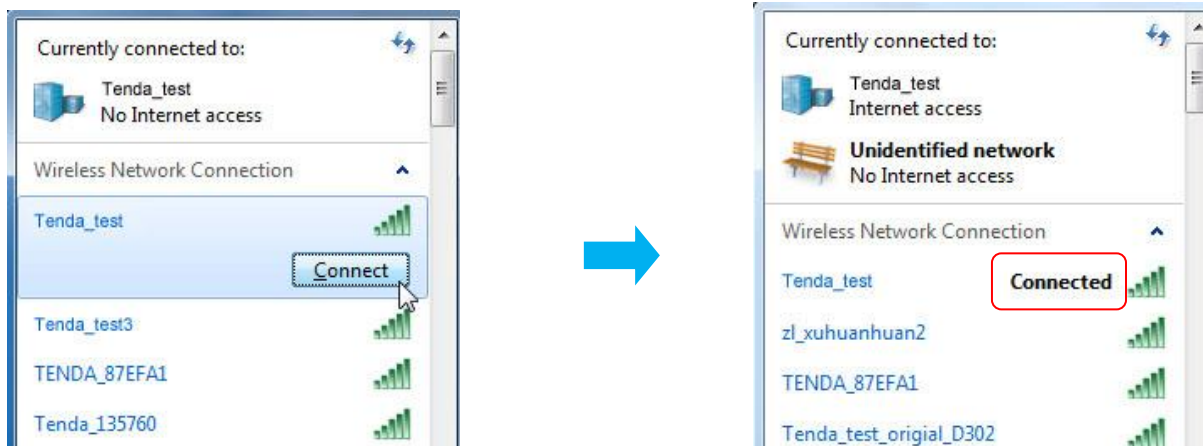


## Windows 7

1. Left click **Network** icon (  or  or  ) on the lower right corner of your desktop to display the available wireless networks.





2. Select a wireless network you want to connect, click **Connctet** and do as the screen prompts.





## Windows 8

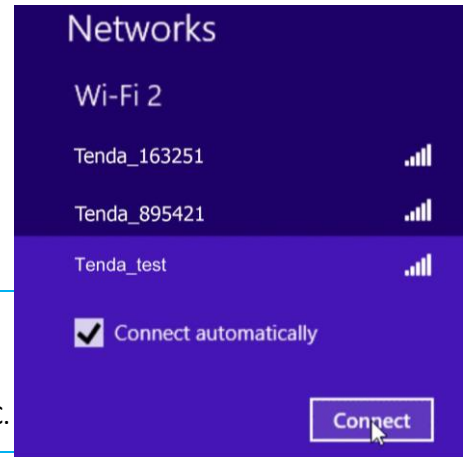
1. Click the icon  or  on the lower right corner of your desktop.



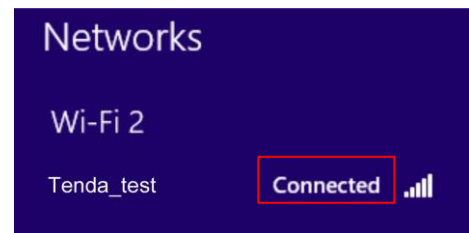
2. Select your wireless network from the list, click **Connect** and then follow onscreen instructions.

**Tip:**

If you cannot find wireless network, ensure the Airplane Mode is not enabled on your PC.



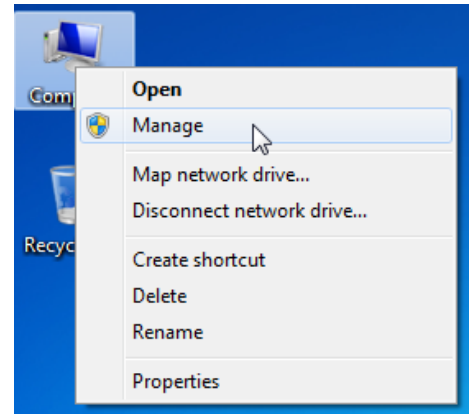
3. When your wireless network is connected successfully, "Connected" status will appear.



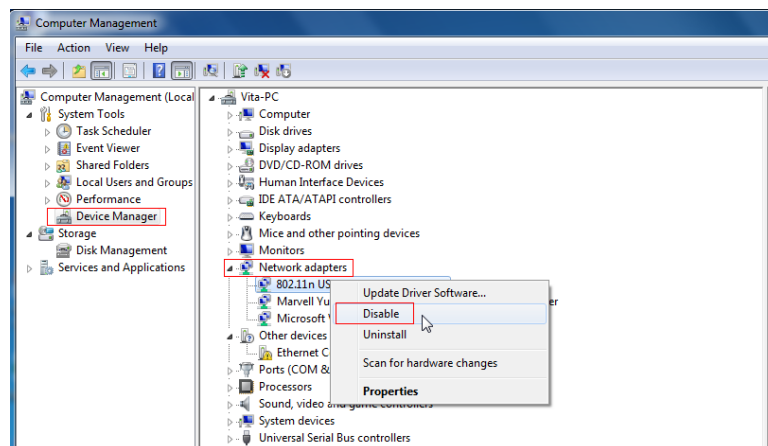
## Appendix 3 Disable Other Wireless Adapter

**Windows 7** is used as a guide to illustrate details. If you are using other operation systems, take that of Windows 7 for reference.

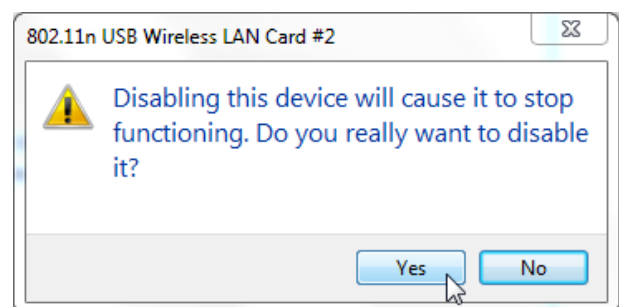
1. Right click “Computer” and select “Manage”.



2. On the Computer Management screen, select “Device Manager” — “Network adapters”, and right click the network adapter you want to disable and click “Disable”.



3. Click the “Yes” on the dialogue box to disable the network adapter.



## Appendix 4 Safety and Emission Statement



### CE Mark Warning

This is a Class B product. In a domestic environment, this product may cause radio interference, in which case the user may be required to take adequate measures. This device complies with EU 1999/5/EC.

**NOTE:** (1) The manufacturer is not responsible for any radio or TV interference caused by unauthorized modifications to this equipment. (2) To avoid unnecessary radiation interference, it is recommended to use a shielded RJ45 cable.



### FCC Statement

This device complies with Part 15 of the FCC Rules. Operation is subject to the following two conditions: (1) This device may not cause harmful interference, and (2) this device must accept any interference received, including interference that may cause undesired operation.

This equipment has been tested and found to comply with the limits for a Class B digital device, pursuant to Part 15 of the FCC Rules. These limits are designed to provide reasonable protection against harmful interference in a residential installation. This equipment generates, uses and can radiate radio frequency energy and, if not installed and used in accordance with the instructions, may cause harmful interference to radio communications. However, there is no guarantee that interference will not occur in a particular installation. If this equipment does cause harmful interference to radio or television reception, which can be determined by turning the equipment off and on, the user is encouraged to try to correct the interference by one of the following measures:

- Reorient or relocate the receiving antenna.
- Increase the separation between the equipment and receiver.
- Connect the equipment into an outlet on a circuit different from that to which the receiver is connected.
- Consult the dealer or an experienced radio/TV technician for help.

FCC Caution: Any changes or modifications not expressly approved by the party responsible for compliance could void the user's authority to operate this equipment.

This transmitter must not be co-located or operating in conjunction with any other antenna or transmitter.

The manufacturer is not responsible for any radio or TV interference caused by unauthorized modifications to this equipment.

### Radiation Exposure Statement

This device complies with FCC radiation exposure limits set forth for an uncontrolled environment and it also complies with Part 15 of the FCC RF Rules.

**NOTE:** (1) The manufacturer is not responsible for any radio or TV interference caused by unauthorized modifications to this equipment. (2) To avoid unnecessary radiation interference, it is recommended to use a shielded RJ45 cable.

### NOM

LA OPERACIÓN DE ESTE DISPOSITIVO ESTA SUJETA A LAS SIGUIENTES CONDICIONES:

- a) Es posible que este equipo o dispositivo no cause interferencia perjudicial.
- b) Este equipo o dispositivo debe aceptar cualquier tipo de interferencia, incluyendo la que pueda causar su operación no deseada.